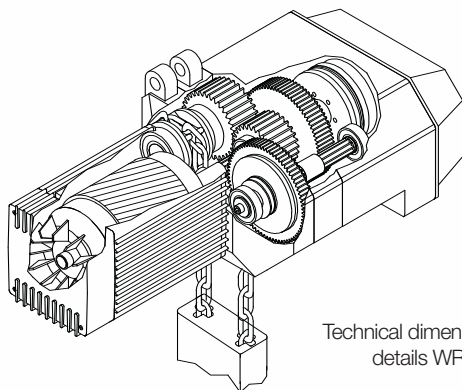


WR Series

electric chain hoists



Technical dimensional details WR serie

RWM WR series hoists are supplied with **upper and lower electric limit switches** to prevent hook over travel and prevent the use of the clutch as an ultimate limit and extending the life of the clutch and gearbox.

They are manufactured with two micro switches that operate on the auxiliary circuit of the hoist contactors cutting out operating contactor in the direction of lift.

The hoists are also equipped with a slipping clutch that is set to 120% of the working load limit to prevent accidental overloading.

All hoists are manufactured to CEI EN60204 governing the safety of electrical equipment with low voltage controls 24v, via a transformer mounted in a steel enclosure within the hoist body.

Due to the high quality of electrical contactors used and the 400 vac brake RWM guarantee the WR series hoists for more than 240 operations per hour.

WR series hoists are designed to lift loads from 1000 kg to 5000 kg in a production environment with a high duty cycle and proven reliability. The hoist body is completely manufactured from aluminium and steel with no plastic components. With the new design RWM have produced a hoist with the minimum low headroom and at the same time safe and reliable with particular attention to the selection and test of materials used.

Electric motor

The three phase motor is produced with single or double windings for single or dual speeds. The insulation is class F for both motors. Manufactured to FEM standard 2m, the WR hoists have a duty of 55% on single speed hoists and 15+40% on dual speed hoists. Standard operating voltage's 230/400V, 3 phase, 50 Hz, other voltages available on request.

Hoist motor protected to IP 55 against ingress of dust and water, upgradeable to IP 65 upon request. The hoists 3000/4000/5000 have a standard fan assisted motor for better cooling and increased duty cycles.

Reduction gear

The reduction gears are designed in such a way that the speed of the hoist can be changed simply by increasing or decreasing the number of components in the gearbox.

The gears are manufactured from high tensile steel and are hardened and heat treated to give maximum life. With the correct choice of oil the hoist can work within the following temperature range, -20°C to +60°C.

The **Hoist brake** is a 400 V AC electro magnetic brake type. The advantages of this 400v three phase brake are, high braking power, very strong structure and no transformer, the brake is manufactured from aluminium die-casting for good heat dissipation, the brake coil is fully encased in epoxy resin.

The brake disk is manufactured from asbestos free material.



Type F dimensions and technical specifications

Model	Capacity kg	Speed m/min.	Kw	Pull of chain	Ø chain	A	B1	B2	B3	B4	B5	Ø hole	C2	C3	C4	D	I3	I4	S	S1	G	V	Weight kg
1000WR8	1000	8	2	1	10	440	127	73	/	273	70	40	345	310	655	168	216	127	290	235	25	168	78
1000WR12	1000	12	3	1	10	605	125	54	54	350	85	40	320	300	620	235	220	235	330	300	25	162	98
1000WR28	1000	2-8	0,5-2	1	10	440	127	73	/	273	70	40	345	310	655	168	216	127	290	235	25	168	80
1000WR312	1000	3-12	0,7-3	1	10	565	125	54	54	350	85	40	320	300	620	235	220	235	330	300	25	162	83
1500WR4	1500	4	2	1	10	466	127	73	/	273	70	40	345	310	655	168	216	127	290	235	25	168	90
1500WR8	1500	8	3	1	10	605	125	54	54	350	85	40	320	300	620	235	220	235	330	300	25	162	98
1500WR12	1500	12	3	1	10	605	125	54	54	350	85	40	320	300	620	235	220	235	330	300	25	162	98
1500WR14	1500	1-4	0,5-2	1	10	466	127	73	/	273	70	40	345	310	655	168	216	127	330	235	25	168	90
1500WR28	1500	2-8	0,7-3	1	10	605	125	54	54	350	85	40	350	300	650	235	220	235	290	300	25	162	105
1500WR312	1500	3-12	0,7-3	1	11	605	125	54	54	350	85	40	350	330	680	235	220	235	330	300	25	162	98
2000WR4	2000	4	2	1	10	466	127	73	/	273	70	40	345	310	655	168	216	127	290	235	25	168	90
2000WR8	2000	8	3	1	11	605	125	54	54	350	85	40	320	330	650	235	220	235	330	300	25	162	105
2000WR14	2000	1-4	0,5-2	1	10	466	127	73	/	273	70	40	345	310	655	168	216	127	290	235	25	168	90
2000WR28	2000	2-8	0,7-3	1	11	605	125	54	54	350	85	40	350	330	680	235	220	235	330	300	25	162	98
2500WR8	2500	8	3	1	11	605	125	54	54	350	85	40	320	330	650	235	220	235	330	300	25	162	98
2500WR28	2500	2-8	0,8-3,5	1	11	605	125	54	54	350	85	40	350	330	680	235	220	235	330	300	25	162	98
3200WR4	3200	4	3	2	10	670	125	54	54	350	85	40	320	300	620	235	270	185	330	300	25	162	103
3200WR14	3200	1-4	0,7-3	2	10	670	125	54	54	350	85	40	350	330	680	235	270	185	330	300	25	162	113
4000WR4	4000	4	3	2	11	685	125	54	54	350	110	40	320	330	650	235	320	185	390	300	25	162	113
4000WR14	4000	1-4	0,7-3	2	11	685	125	54	54	350	110	40	350	330	680	235	320	185	390	300	25	162	118
5000WR4	5000	4	3	2	11	685	125	54	54	350	110	40	320	330	650	235	320	185	390	300	25	162	123
5000WR14	5000	1-4	0,8-3,5	2	11	685	125	54	54	350	110	40	350	330	680	235	320	185	390	300	25	162	123

Type CS dimensions and technical specifications

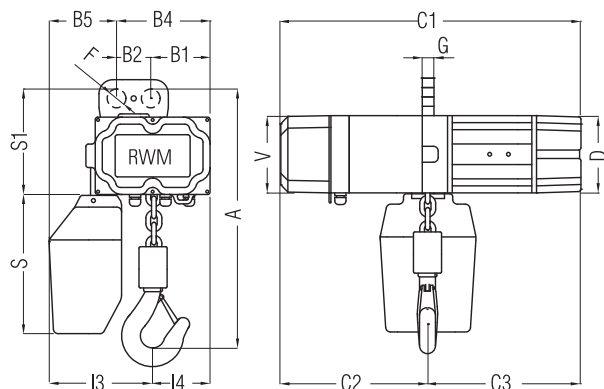
Model	Capacity kg	Speed m/min.	Kw	Pull of chain	Ø chain	C2	C3	D	I1	I2	I3	I4	L	M	M1	S	S1	S2	V	V1	Ø wheel	Weight kg
1000WR8	1000	8	2	1	10	345	310	168	188	107	216	127	162	500	90	290	235	141	168	195	70	93
1000WR12	1000	12	3	1	10	320	330	235	150	170	220	235	176	655	95	330	300	165	162	223	80	120
1000WR28	1000	2-8	0,5-2	1	10	345	310	168	188	107	216	127	162	500	90	290	235	141	168	195	70	95
1000WR312	1000	3-12	0,7-3	1	10	320	300	235	150	170	220	235	176	615	95	330	300	165	162	223	80	98
1500WR4	1500	4	2	1	10	345	310	168	188	107	216	127	162	526	90	290	235	141	168	195	70	105
1500WR8	1500	8	3	1	10	320	300	235	150	170	220	235	176	655	95	330	300	165	162	223	80	120
1500WR12	1500	12	3	1	10	320	330	235	150	170	220	235	176	655	95	330	300	165	162	223	80	120
1500WR14	1500	1-4	0,5-2	1	10	345	310	168	188	107	216	127	162	526	90	290	235	141	168	195	70	105
1500WR28	1500	2-8	0,7-3	1	10	350	300	235	150	170	220	235	176	655	95	330	300	165	162	223	80	120
1500WR312	1500	3-12	0,7-3	1	11	350	330	235	150	170	220	235	176	655	95	330	300	165	162	223	80	120
2000WR4	2000	4	2	1	10	345	310	168	188	107	216	127	162	526	90	290	235	141	168	195	70	105
2000WR8	2000	8	3	1	11	320	330	235	150	170	220	235	176	655	95	330	300	165	162	223	80	120
2000WR14	2000	1-4	0,5-2	1	10	345	310	168	188	107	216	127	162	526	90	290	235	141	162	195	70	105
2000WR28	2000	2-8	0,7-3	1	11	350	330	235	150	170	220	235	176	655	95	330	300	165	162	223	80	125
2500WR8	2500	8	3	1	11	320	330	235	150	170	220	235	176	655	95	330	300	165	162	223	80	115
2500WR28	2500	2-8	0,8-3,5	1	11	350	330	235	150	170	220	235	176	655	95	330	300	165	162	223	80	125
3200WR4	3200	4	3	2	10	320	300	235	150	170	270	185	176	717	95	330	300	165	162	223	80	125
3200WR14	3200	1-4	0,7-3	2	10	350	330	235	150	170	270	185	176	717	95	330	300	165	162	223	80	135
4000WR4	4000	4	3	2	11	320	330	235	150	170	320	185	176	735	95	390	300	165	162	223	80	135
4000WR14	4000	1-4	0,7-3	2	11	350	330	235	150	170	320	185	176	735	95	390	300	165	162	223	80	140
5000WR4	5000	4	3	2	11	320	330	235	150	170	320	185	176	735	95	390	300	165	162	223	80	145
5000WR14	5000	1-4	0,8-3,5	2	11	350	330	235	150	170	320	185	176	735	95	390	300	165	162	223	80	145

Type CE dimensions and technical specifications

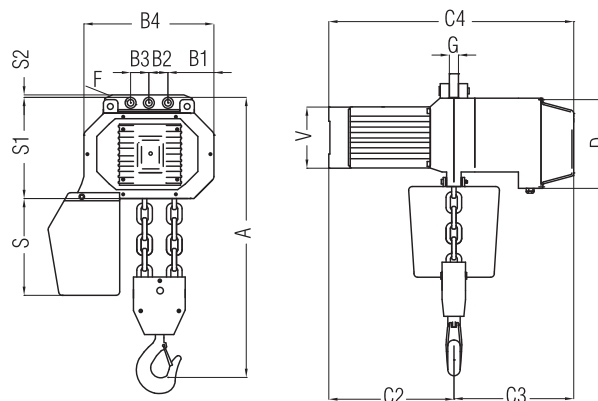
Model	Capacity kg	Speed m/min.	Kw	Pull of chain	Ø chain	C2	C3	D	I1	I2	I3	I4	L	M	M1	P	S	S1	S2	V	V1	Z	Ø wheel	Weight kg
1000WR8	1000	8	2	1	10	345	310	168	188	107	220	235	162	500	90	268	290	235	141	168	195	710	70	110
1000WR12	1000	12	3	1	10	320	330	235	150	170	220	235	176	655	95	310	330	300	165	162	223	710	80	130
1000WR28	1000	2-8	0,5-2	1	10	345	310	168	188	107	220	235	162	500	90	268	290	235	141	168	195	710	70	110
1000WR312	1000	3-12	0,7-3	1	10	320	300	235	150	170	220	235	176	615	95	310	330	300	165	162	223	710	80	130
1500WR4	1500	4	2	1	10	345	310	168	188	107	220	235	162	526	90	268	290	235	141	168	195	710	70	115
1500WR8	1500	8	3	1	10	320	300	235	150	170	220	235	176	655	95	310	330	300	165	162	223	710	80	130
1500WR12	1500	12	3	1	10	320	330	235	150	170	220	235	176	655	95	310	330	300	165	162	223	710	80	130
1500WR14	1500	1-4	0,5-2	1	10	345	310	168	188	107	220	235	162	526	90	268	290	235	141	168	195	710	70	115
1500WR28	1500	2-8	0,7-3	1	10	350	300	235	150	170	220	235	176	655	95	310	330	300	165	162	223	710	80	130
1500WR312	1500	3-12	0,7-3	1	11	350	330	235	150	170	220	235	176	655	95	310	330	300	165	162	223	710	80	130
2000WR4	2000	4	2	1	10	345	310	168	188	107	220	235	162	526	90	268	290	235	141	168	195	710	70	115
2000WR8	2000	8	3	1	11	320	330	235	150	170	220	235	176	655	95	310	330	300	165	162	223	710	80	130
2000WR14	2000	1-4	0,5-2	1	10	345	310	168	188	107	220	235	162	685	90	268	290	235	141	223	195	134	70	115
2000WR28	2000	2-8	0,7-3	1	11	350	330	235	150	170	220	235	176	655	95	310	330	300	165	162	223	710	80	134
2500WR8	2500	8	3	1	11	320	330	235	150	170	220	235	176	655	95	310	330	300	165	162	223	710	80	134
2500WR28	2500	2-8	0,8-3,5	1	11	350	330	235	150	170	220	235	176	655	95	310	330							

Type F dimensions

WR 2000 - Type F

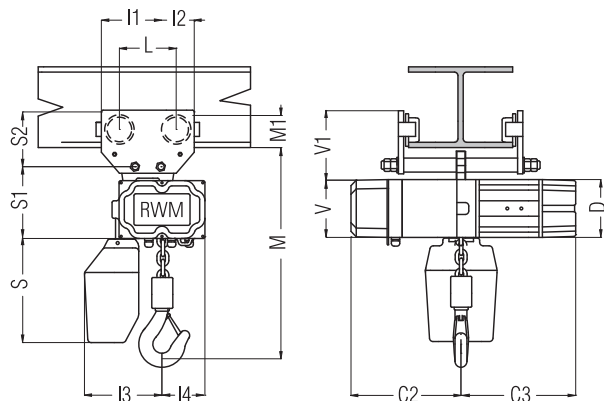


WR 3000/4000/5000 - Type F

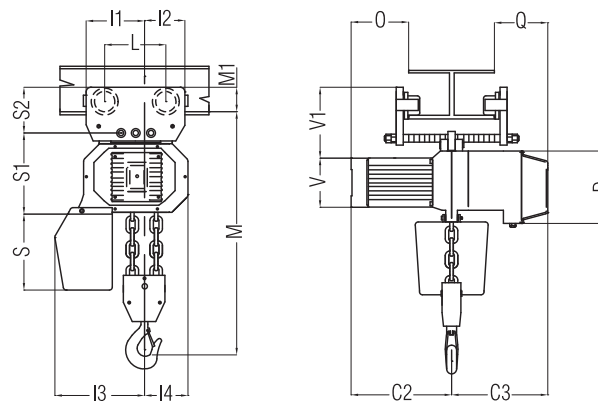


Type CS dimensions

WR 2000 - Type CS

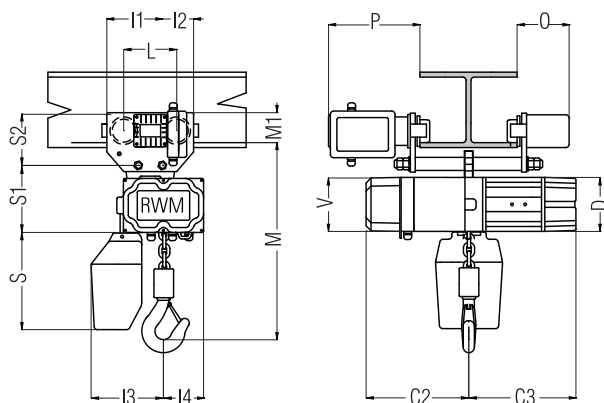


WR 3000/4000/5000 - Type CS

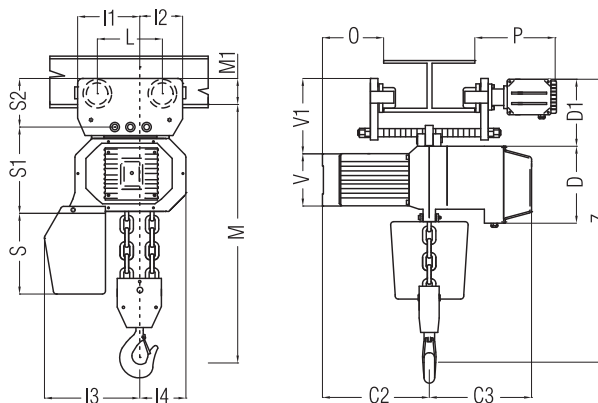


Type CE dimensions

WR 2000 - Type CE



WR 3000/4000/5000 - Type CE



models **WR Series**



Type F



Type CS



Type CE